



# ENERGY STORAGE BATTERY - GEL ENERGY STORAGE SERIES

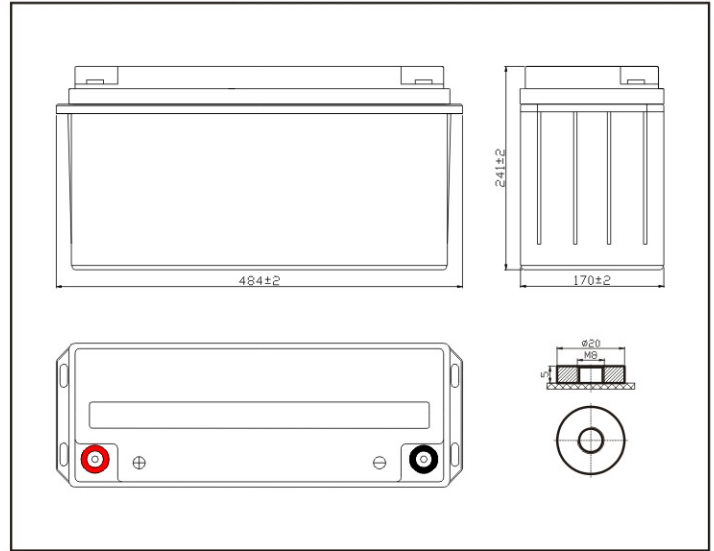
**MODEL: OT150-12(GEL)/CN**

**NO.: 302080001-00037**



## Plane Chart:

Unit:(mm) Terminal type:(T3)



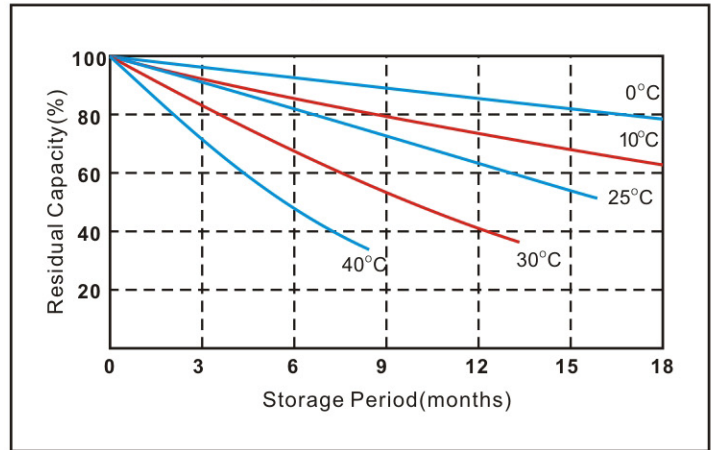
ISO 9001  
 ISO 14001  
 OHSAS18001



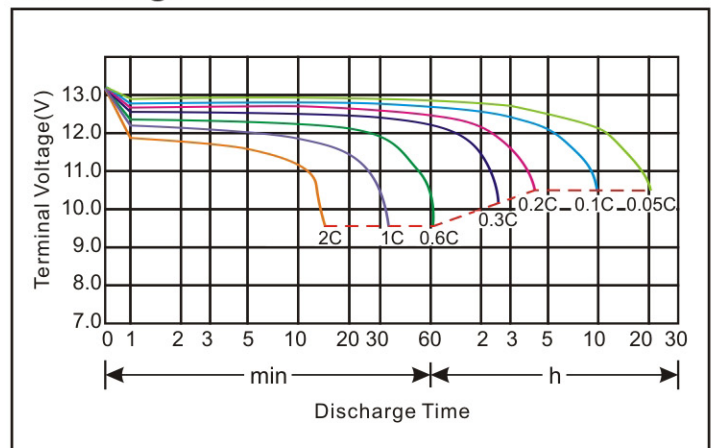
## Parameter Chart:

| Volts                            |                                  | 12V  |  |
|----------------------------------|----------------------------------|--|--|
| Capacity(25°C)                   | 10 hours rate (15A)              | 150Ah  |  |
| Discharge Current Testing (25°C) | 1 hours rate (82.5A)             | 83Ah   |  |
|                                  | 3 hours rate (37.5A)             | 113Ah  |  |
| Internal Resistance              | Full Charged Battery 25°C        | 3.4mΩ  |  |
| Capacity Affected By Temperature | 40°C                             | 104%   |  |
|                                  | 25°C                             | 100%   |  |
|                                  | 0°C                              | 83%  |  |
|                                  | -15°C                            | 65%  |  |
| Residual Capacity (25°C)         | Capacity After 3 Months Storage  | 91%  |  |
|                                  | Capacity After 6 Months Storage  | 82%  |  |
|                                  | Capacity After 12 Months Storage | 65%  |  |
| Charge (Constant Voltage)        | Cycle (25°C)                     | Initial Charging Current Less Than 45A<br>Voltage 14.5~14.9V |  |
|                                  | Float (25°C)                     | Charge Voltage 13.6~13.8V                                    |  |
| Weight (Approx)                  |                                  | 42.5Kg   |  |

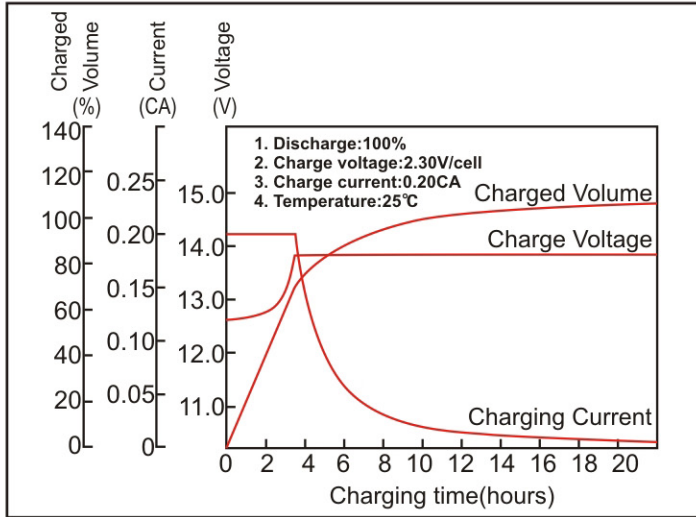
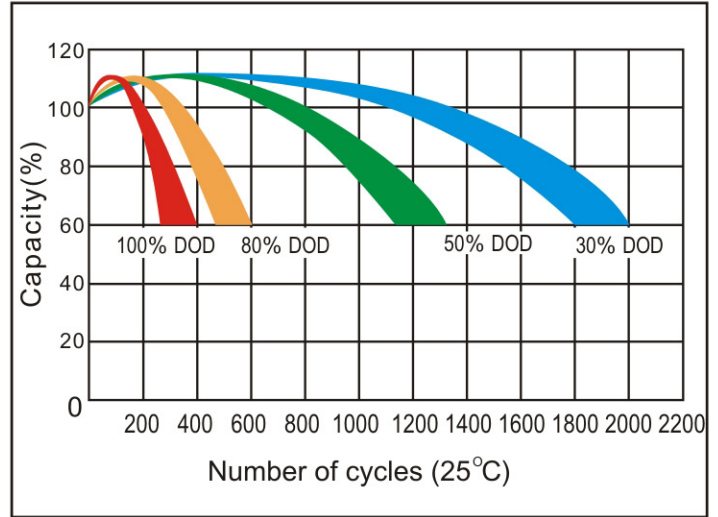
## Residual Capacity



## Discharge Current 25°C



★The above are average and data obtained from the first 3 charge/discharge cycles. These are not minimum values.

**Constant voltage charging characteristics**

**Cycle service life in relation to the depth of discharge**

**Constant Current Discharge Characteristics (A, 25°C)**

| F.V/Time | 15min | 30min | 60min | 2h   | 3h   | 4h   | 5h   | 8h   | 10h  | 20h |
|----------|-------|-------|-------|------|------|------|------|------|------|-----|
| 9.60V    | 267.3 | 158.4 | 96.5  | 54.3 | 39.2 | 31.1 | 27.3 | 18.1 | 15.1 | 7.9 |
| 10.2V    | 256.4 | 152.5 | 92.7  | 53.5 | 38.6 | 30.7 | 26.9 | 17.9 | 15.1 | 7.8 |
| 10.5V    | 251.5 | 148.5 | 90.8  | 53.0 | 38.2 | 30.5 | 26.6 | 17.8 | 15.0 | 7.7 |
| 10.8V    | 243.5 | 144.5 | 88.0  | 52.4 | 37.8 | 29.5 | 26.4 | 17.8 | 15.0 | 7.7 |

**Constant Power Discharge Characteristics (Watt, 25°C)**

| F.V/Time | 15min  | 30min  | 60min  | 2h    | 3h    | 4h    | 5h    | 8h    | 10h   | 20h  |
|----------|--------|--------|--------|-------|-------|-------|-------|-------|-------|------|
| 9.60V    | 2935.4 | 1777.1 | 1100.9 | 628.7 | 461.3 | 365.3 | 322.7 | 214.8 | 181.2 | 94.5 |
| 10.2V    | 2815.6 | 1710.7 | 1056.3 | 618.8 | 454.4 | 360.4 | 318.8 | 212.9 | 179.2 | 93.9 |
| 10.5V    | 2760.1 | 1666.2 | 1034.6 | 612.8 | 449.5 | 358.4 | 314.8 | 211.9 | 178.2 | 93.2 |
| 10.8V    | 2674.0 | 1621.6 | 1002.9 | 606.9 | 445.5 | 347.5 | 312.8 | 210.9 | 177.2 | 92.7 |

**Capacity Factors With Different Temperature**

| Battery Type |     | -20°C | -10°C | 0°C | 5°C | 10°C | 20°C | 25°C | 30°C | 40°C | 45°C |
|--------------|-----|-------|-------|-----|-----|------|------|------|------|------|------|
| GEL Battery  | 12V | 50%   | 70%   | 83% | 85% | 90%  | 98%  | 100% | 102% | 104% | 105% |

★The above are average and data obtained from the first 3 charge/discharge cycles. These are not minimum values.