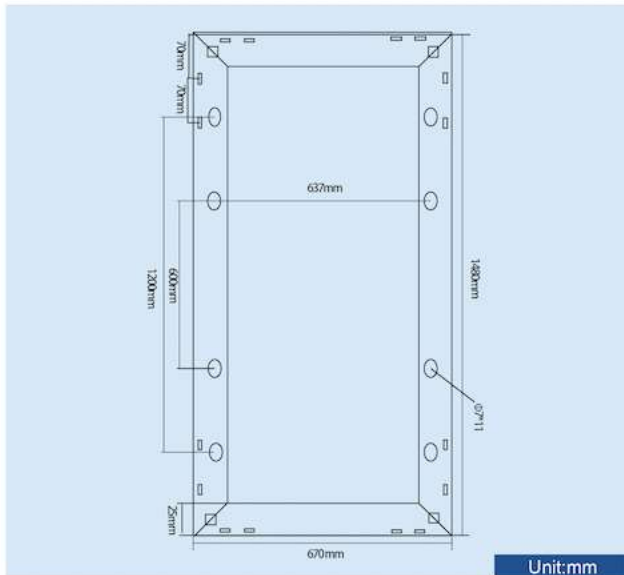


## CE Features

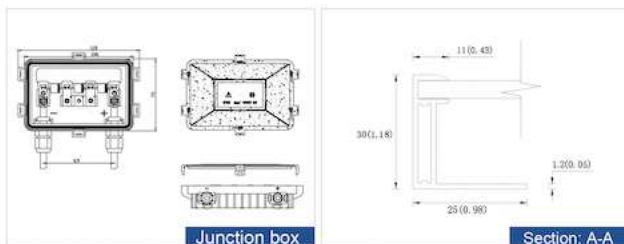
- Stable output voltage 12V DC.
- High efficiency.
- Outstanding low-light performance.
- High transmission tempered glass.
- Durable anodized aluminum frame.
- Efficient protection from frame deformation and water accumulation.
- Rugged design to withstand high wind pressure and snow load, easy installation.



Unit:mm

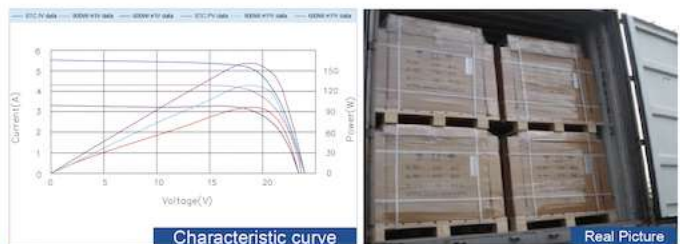
Electrical Characteristics	BCT160-12
Maximum power at STC (Pmax)	160W
Optimum operating voltage (Vmp)	19.8V
Optimum operating current (Imp)	8.08A
Open-circuit voltage (Voc)	22.1V
Short-circuit current (Isc)	9.16A
Temperature coefficient of Voc	-0.31%/°C
Temperature coefficient of Isc	0.05%/°C
Temperature coefficient of Pmax	-0.40%/°C
NOTC (Air20°C, Sun0.8km <sup>2</sup> /m <sup>2</sup> , Wind1m/s)	45±2°C
Operating temperature	-40°C to 85°C
Max. system voltage	1000V DC
Power tolerance	±5W

\* STC: Irradiance 1000W/m<sup>2</sup>, Module temperature 25°C, AM=1.5



Junction box

Section: A-A



Characteristic curve

Real Picture

Specification	BCT160-12
Cell	Poly-crystalline silicon solar cells
No. of cells and connection	36 (4×9)
Weight(kg)	10.8kg
Dimensions (mm)	1480×670×30mm
Package size / quantity	1500×690×140mm/4 block

\* Specifications are subject to change without notice at any time.

\* 5 years warranty on workmanship, guarantee the power 90% in the first 10 years and 80% in 25 years.